


SPECIFICATIONS FOR OLED MODULE

CUSTOMER	
MODEL	SCE049001-V01
CUSTOMER APPROVED	

APPROVED BY	CHECKED BY	ORGANIZED BY
	Lr.Yin	Wf.Luo



0158

CONTENTS

- General Description
- Application Circuit
- Electrical Characteristics
- Optical characteristics
- Functional Specifications
- Reliability
- Quality Control Specifications
- Precaution
- Outline Dimension
- Packing method

1. General Description

This Module SCE049001-V01 is Organic light emitting diode (OLED). This specification covers the delivery requirements for the organic light emitting diode display delivered by quality to Customer.

1.1. Mechanical & Display Specifications

Item	Standard value	Unit
Number of pixels	64 × 32	pixel
Module size	14.5 × 11.6 × 1.227	mm
Viewing area	12.58 × 6.98	mm
Active area	11.18 × 5.58	mm
Dot size	0.155 × 0.155	mm
Dot pitch	0.175 × 0.175	mm
Display color	White	-
Viewing angle	160°	-
Aperture rate	78%	-
Driver IC	SSD1306BZ	-
Interface	I2C	-
Weight	TBD	g

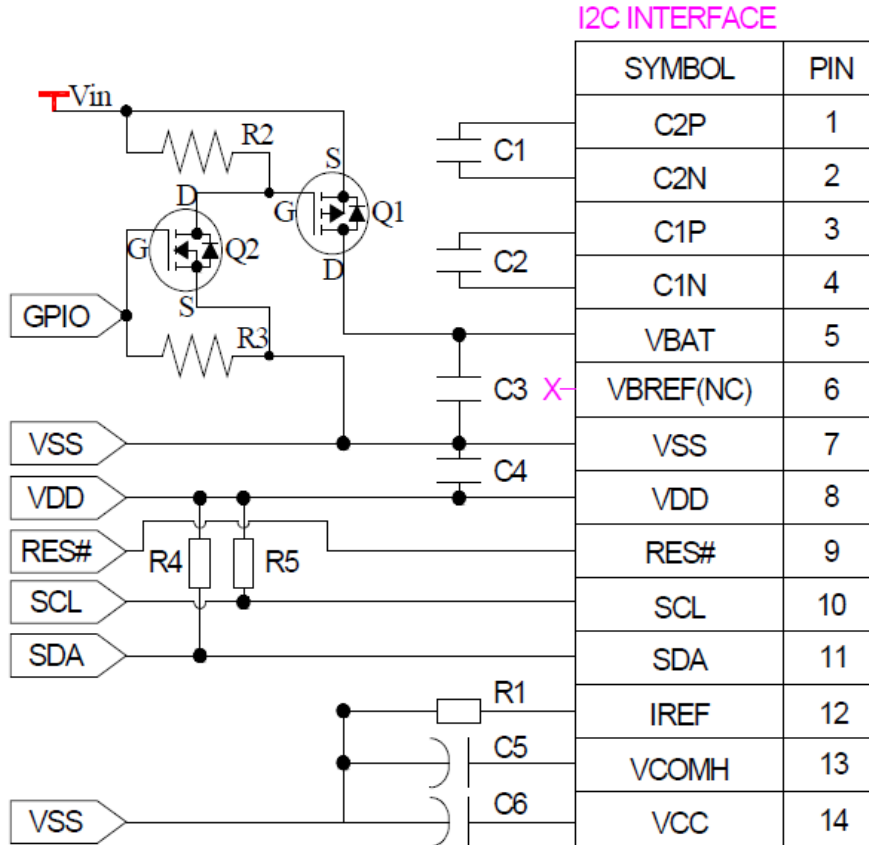
1.2. Interface Pin

Pin No.	Symbol	Type	Description
1	C2P	P	C1P/C1N-Pin for charge pump capacitor. C2P/C2N-Pin for charge pump capacitor. Connect to each other with a capacitor. They must be floated when the Charge pump not use.
2	C2N	P	
3	C1P	P	
4	C1N	P	
5	VBAT	P	Power supply for charge pump regulator circuit. It must be connected to external source when charge pump is used. It must be float when charge pump is not used.
6	VBREF	P	Reserved pin. It should be kept NC.
7	VSS	P	Ground pin. It must be connected to external ground.
8	VDD	P	Power pin for logic circuit. It must be connected to external source.
9	RES#	I	Hardware reset input pin. Active “L”.
10	SCL	I	I2C interface clock wire
11	SDA	I	I2C interface data wire
12	IREF	P	Current reference for brightness adjustment. This is segment output current reference pin. A resistor should be connected between this pin and VSS .Set the current at 12.5 uA maximum.
13	VCOMH	P	COM signal deselected voltage level. A capacitor should be connected between this pin and VSS.
14	VCC	P	Power supply for OLED driving voltage. A capacitor should be connected between this pin and VSS, when charge pump is used. It must be connected to external source when charge pump is not used.

2. Application Circuit

2.1. I2C Interface With Internal Charge Pump

特别提醒(Special Tips): 主板设计务必加电子开关, 否则, 可能引起漏电流现象
(When design main board, Please add Electronic Switch circuit, otherwise, will be caused leak current)



Recommended Components:

C1, C2: 1 μ F / 16V, X5R

C3, C4: 1 μ F / 16V, X5R

C5, C6: 4.7 μ F / 25V

R1: 560k Ω , $R1 = (\text{Voltage at IREF} - VSS) / IREF$ R2, R3: 47k Ω

R4, R5: 4.7k Ω

Q1: FDN338P

Q2: FDN335N

Notes:

VDD: 1.65~3.3V, it should be equal to MPU I/O voltage. Vin: 3.5~4.2V

The I2C slave address is 0111100b

3. Electrical Characteristics

3.1. Absolute Maximum Rating

Characteristic	Symbol	Standard Value			Unit	Notes
		MIN	TYP	MAX		
Power Supply Voltage(1)	VDD	-0.3	-	+4.0	V	1,2
Power Supply Voltage(2)	VBAT	-0.3	-	4.5	V	1,2
Power Supply Voltage(3)	VCC	0	-	15.0	V	1,2
Operating Temperature	T _{OPR}	-40	-	+70	°C	
Storage Temperature	T _{STG}	-40	-	+85	°C	3
Life Time (120 cd/m ²)		10000	-	-	hour	4
Life Time (80 cd/m ²)		30000	-	-	hour	4
Life Time (60 cd/m ²)		50000	-	-	hour	4

Note 1: All the above voltages are on the basis of “V_{SS} = 0V”.

Note 2: When this module is used beyond the above absolute maximum ratings, permanent breakage of the module may occur. Also, for normal operations, it is desirable to use this module under the conditions according to Section “DC Electrical Characteristics”. If this module is used beyond these conditions, malfunctioning of the module can occur and the reliability of the module may deteriorate.

Note 3: The defined temperature ranges do not include the polarizer. The maximum withstood temperature of the polarizer should be 80°C.

Note 4: V_{CC} = 7.5V, T_a = 25 °C, 50% Checkerboard.

End of lifetime is specified as 50% of initial brightness reached.

The average operating lifetime at room temperature is estimated by the accelerated operation at high temperature conditions.

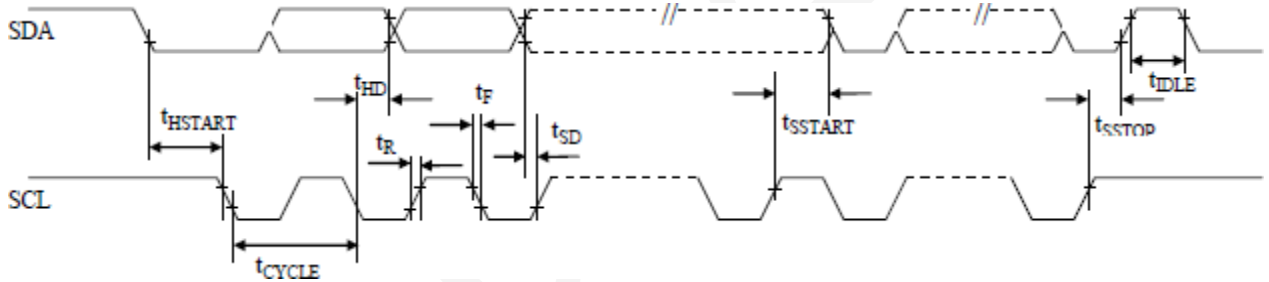
3.2. DC Electrical Characteristics

Symbol	Parameter	Test condition	Standard Value			Unit
			MIN	TYP	MAX	
VDD	Logic Supply Voltage	-	1.65	2.8	3.3	V
VBAT	Charge Pump Regulator Supply Voltage	Internal Charge Pump Enable	3.5	-	4.2	V
VCC	Operating Voltage for OLED (Generated by charge pump)	Internal Charge Pump Enable	7.0	7.5		V
VCC	Operating Voltage for OLED (Supplied Externally)	Internal Charge Pump Disable	8.5	9.0	9.5	V
V _{IH}	High Logic Input Level		0.8*VDD	-	-	V
V _{IL}	Low Logic Input Level		-	-	0.2*VDD	V
V _{OH}	High Logic Output Level	I _{OUT} = 100 μA, 3.3MHz	0.9*VDD	-	-	V
V _{OL}	Low Logic Output Level	I _{OUT} = 100 μA, 3.3MHz	-	-	0.1*VDD	V
I _{DD, SLEEP}	I _{DD} , Sleep Mode Current		-	-	10	uA
I _{BAT, SLEEP}	I _{BAT} , Sleep Mode Current		-	-	10	uA
I _{CC, SLEEP}	I _{CC} , Sleep Mode Current		-	-	10	uA
I _{DD}	VDD Supply Current		-	50	150	uA
I _{CC}	VCC Supply Current (VCC Supplied Externally)	VDD = 2.8V, VCC = 9V, 100% Display Area Turn on	-	5	10	mA
I _{BAT}	I _{BAT} Supply Current (VCC Generated by charge pump)	VDD = 2.8V, VCC = 7.5V, 100% Display Area Turn on	-	15.5	17.5	mA

3.3. AC Electrical Characteristics

3.3.1. I2C Interface Timing Characteristics

Symbol	Parameter	Min	Typ	Max	Unit
t_{cycle}	Clock Cycle Time	2.5	-	-	us
t_{HSTART}	Start condition Hold Time	0.6	-	-	us
t_{HD}	Data Hold Time (for "SDA _{OUT} " pin)	0	-	-	ns
	Data Hold Time (for "SDA _{IN} " pin)	300	-	-	ns
t_{SD}	Data Setup Time	100	-	-	ns
t_{SSTART}	Start condition Setup Time (Only relevant for a repeated Start condition)	0.6	-	-	us
t_{SSTOP}	Stop condition Setup Time	0.6	-	-	us
t_{r}	Rise Time for data and clock pin	-	-	300	ns
t_{f}	Fall Time for data and clock pin	-	-	300	ns
t_{IDLE}	Idle Time before a new transmission can start	1.3	-	-	us



4. Optical Characteristics

Symbol	Parameter	condition	Standard Value			Unit
			MIN	TYP	MAX	
Lbr	Brightness (VCC Supplied Externally)		160	-	-	cd/m ²
Lbr	Brightness (VCC Generated by charge pump)		160	180	-	cd/m ²
(x)	C.I.E. (White)	C.I.E. 1931	0.23	0.27	0.31	
(y)			0.25	0.29	0.33	
CR	Dark Room Contrast		-	2000:1	-	
	Viewing Angle		-	160	-	degree

* Optical measurement taken at VDD = 2.8V, VCC = 9V & 7.5V.

5. Functional Specifications

5.1. Commands

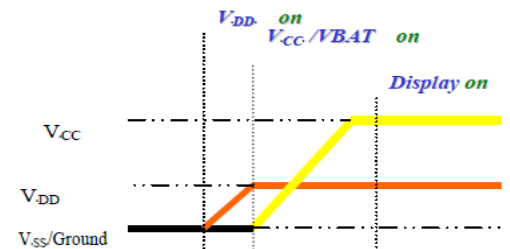
Refer to the SSD1306 IC Spec.

5.2. Power Up and Power Down Sequence

To protect OEL panel and extend the panel life time, the driver IC power up/down routine should include a delay period between high voltage and low voltage power sources during turn on/off. It gives the OEL panel enough time to complete the action of charge and discharge before/after the operation.

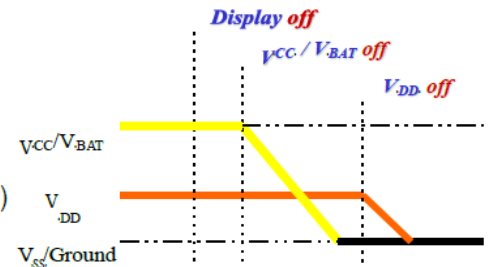
5.2.1. Power up Sequence:

1. Power up V_{DD} / V_{BAT}
2. Send Display off command
3. Initialization
4. Clear Screen
5. Power up V_{CC}
6. Delay 100ms
(When V_{CC} is stable)
7. Send Display on command



5.2.2. Power down Sequence:

1. Send Display off command
2. Power down V_{CC} / V_{BAT}
3. Delay 100ms
(When V_{CC} / V_{BAT} is reach 0 and panel is completely discharges)
4. Power down V_{DD}



Note:

- 1) Since an ESD protection circuit is connected between V_{DD} and V_{CC} inside the driver IC, V_{CC} becomes lower than V_{DD} whenever V_{DD} is ON and V_{CC} is OFF.
- 2) V_{CC} / V_{BAT} should be kept float (disable) when it is OFF.
- 3) Power Pins (V_{DD} , V_{CC} , V_{BAT}) can never be pulled to ground under any circumstance.
 V_{DD} should not be power down before V_{CC} / V_{BAT} power down.

5.3. Reset Circuit

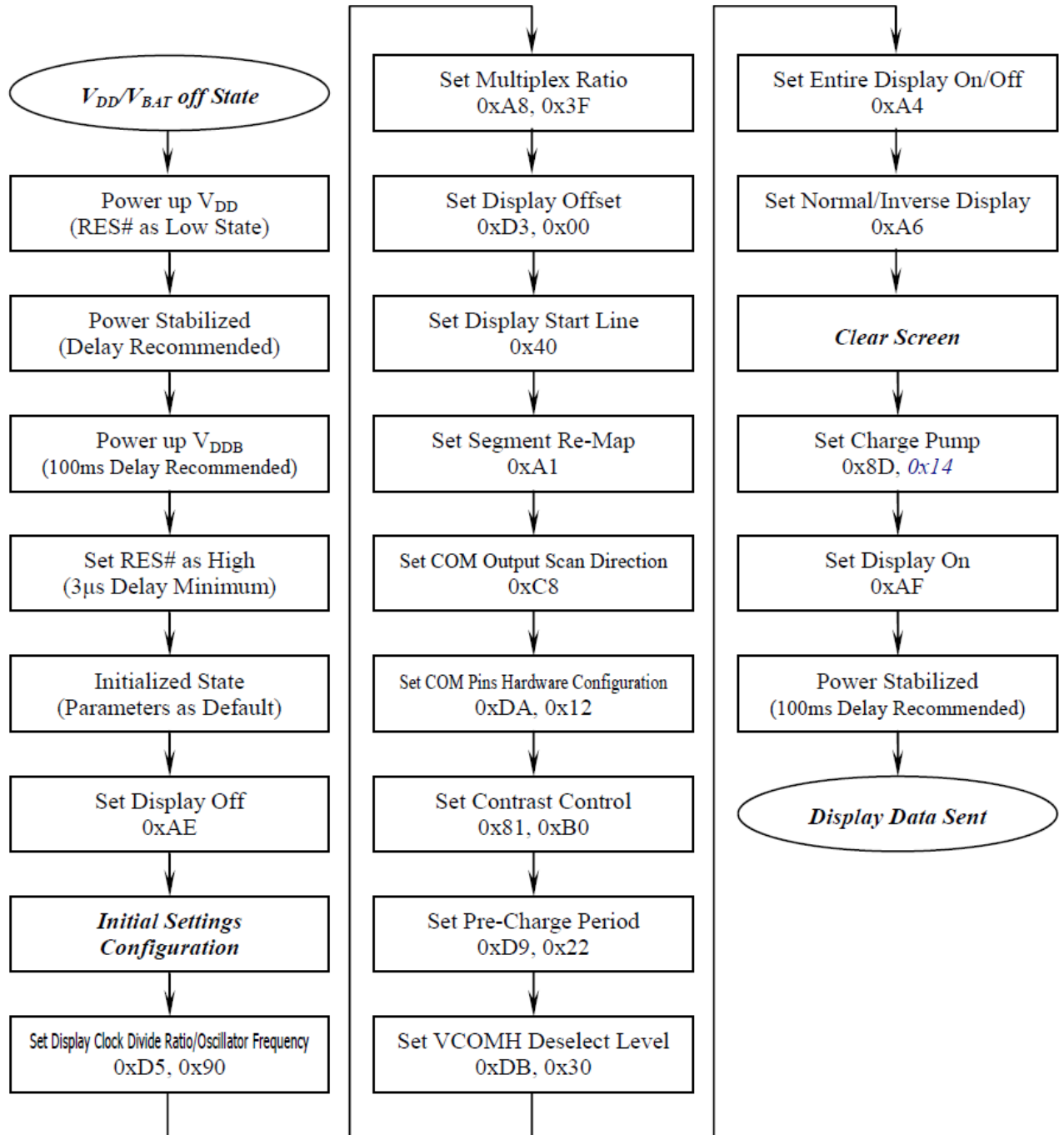
When RES# input is low, the chip is initialized with the following status:

1. Display is OFF
2. 128x64 Display Mode
3. Normal segment and display data column and row address mapping (SEG0 mapped to column address 00h and COM0 mapped to row address 00h)
4. Shift register data clear in serial interface
5. Display start line is set at display RAM address 0
6. Column address counter is set at 0
7. Normal scan direction of the COM outputs
8. Contrast control register is set at 7Fh
9. Normal display mode (Equivalent to A4h command)

5.4. Actual Application Example

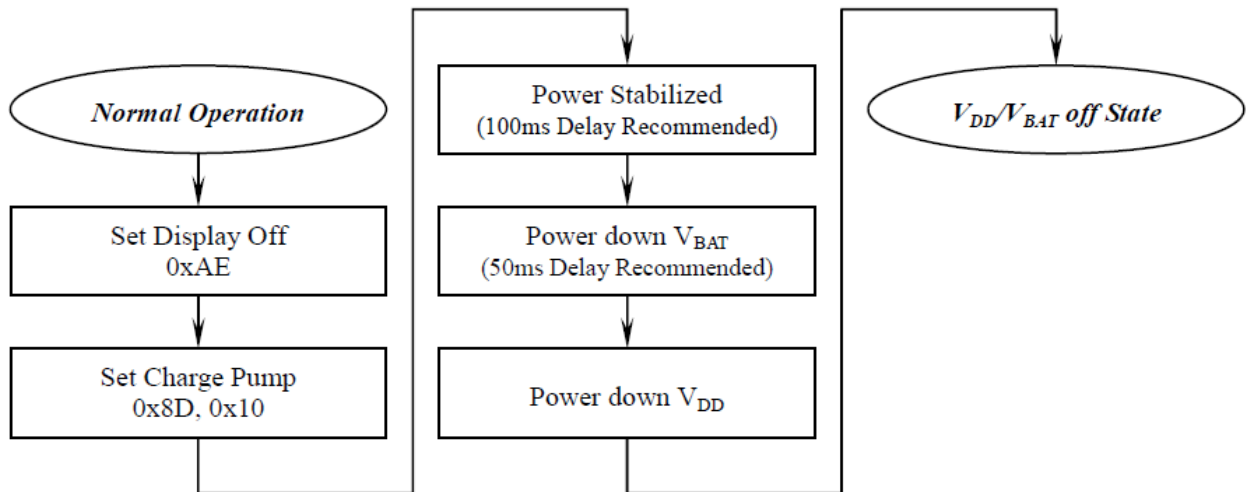
Command usage and explanation of an actual example . VCC generated by charge pump.

<Power up Sequence>

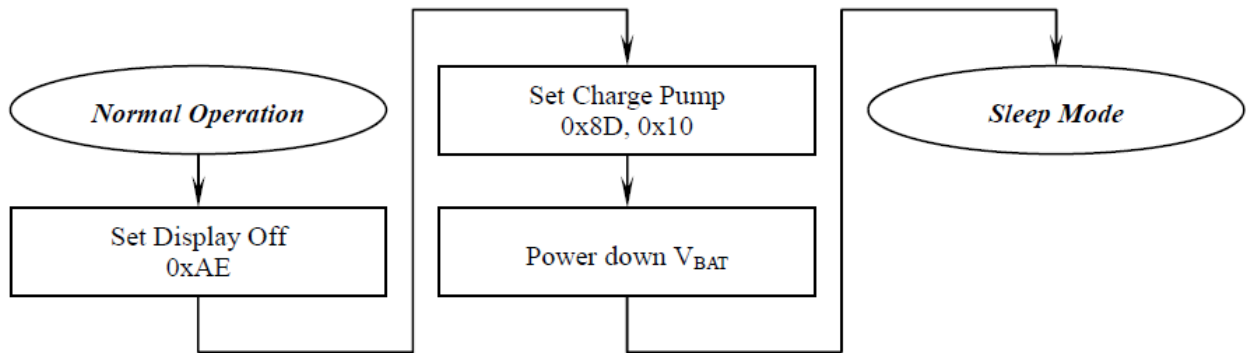


*If the noise is accidentally occurred at the displaying window during the operation, please reset the display in order to recover the display function.

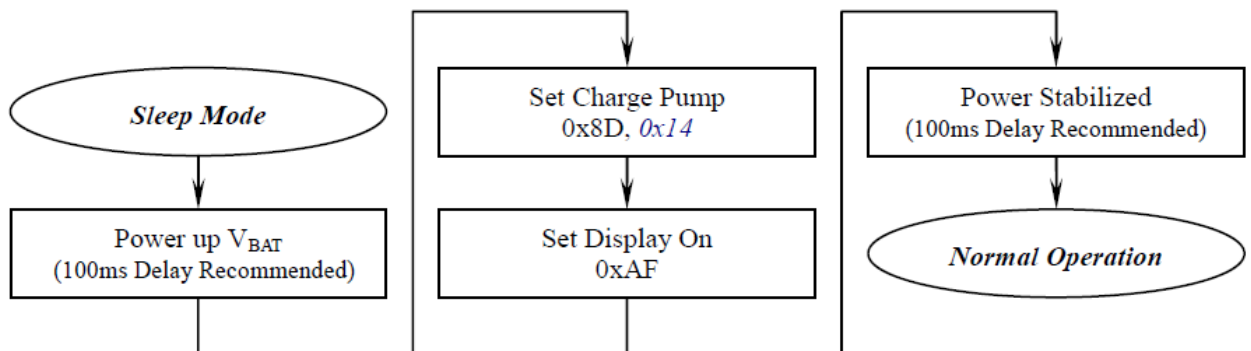
<Power down Sequence>



<Entering Sleep Mode>



<Exiting Sleep Mode>



5.5. Initial Code

```
void init()
{
    RES=1;
    delay(1000);
    RES=0;
    delay(1000);
    RES=1;
    delay(1000);
    start();
    write_byte(0x78);//set slave adress
    write_byte(0x80);
    write_byte(0xAE);//set display display ON/OFF,AFH/AEH
    write_byte(0x80);
    write_byte(0x40);//set display start line:COM0
    write_byte(0x80);
    write_byte(0x81);//set contrast control
    write_byte(0x80);
    write_byte(0x75);
    write_byte(0x80);
    write_byte(0x20);//set memory addressing mode
    write_byte(0x80);
    write_byte(0x02);//page addressing mode
    write_byte(0x80);
    write_byte(0xA0);//set segment re-map
    write_byte(0x80);
    write_byte(0xA4);//entire display on: A4H:OFF/A5H:ON
    write_byte(0x80);
    write_byte(0xA6);//set normal/inverse display: A6H:normal/A7H:inverse
    write_byte(0x80);
    write_byte(0xA8);//set multiplex ratio
    write_byte(0x80);
    write_byte(0x1F);//1/32duty
    write_byte(0x80);
    write_byte(0xC0);//set com output scan direction
    write_byte(0x80);
    write_byte(0xD3);//set display offset
    write_byte(0x80);
    write_byte(0x00);//
    write_byte(0x80);
    write_byte(0xD5);//set display clock divide ratio/oscillator frequency
    write_byte(0x80);
    write_byte(0x80);//105Hz
    write_byte(0x80);
    write_byte(0xD9);//set pre-charge period
    write_byte(0x80);
    write_byte(0x1F);//
    write_byte(0x80);
    write_byte(0xDA);//set com pins hardware configuration
    write_byte(0x80);
    write_byte(0x12);//
    write_byte(0x80);
    write_byte(0xDB);//set vcomh deselect level
    write_byte(0x80);
    write_byte(0x30);//0.83*VCC
    write_byte(0x80);
    write_byte(0x8D);//charge pump setting
    write_byte(0x80);
    write_byte(0x14);//enable charge pump,VCC=7.5V
    write_byte(0x80);
    write_byte(0xAF);//set display display ON/OFF,AEH/AFH
    stop();
}
```

6. Reliability

Item No	Item	Condition	Criterion
1	High temperature Operating	70°C, 240Hours	No defect in displaying and operational function
2	Low temperature Operating	-40°C, 240 Hours	No defect in displaying and operational function
3	High temperature Storage	85°C, 240 Hours	No defect in displaying and operational function
4	Low temperature Storage	-30°C, 240 Hours	No defect in displaying and operational function
5	High temperature & humidity Storage	60°C, 90%RH, 120 Hours	No defect in displaying and operational function
6	Thermal Shock Storage (No operation)	-40°C , 60min.<=> 85°C , 60min. 24 Cycles	No defect in displaying and operational function
7	Vibration test	<ul style="list-style-type: none"> · Operating Time: thirty minutes exposure for each direction (X,Y,Z) · Sweep Frequency: 10 ~ 55Hz (1 min) · Amplitude: 1.5mm 	No defect in displaying and operational function

* The samples used for the above tests do not include polarizer.

* No moisture condensation is observed during tests.

7. Quality Control Specifications

7.1. Environment Required

Customer's test & measurement are required to be conducted under the following conditions:

Temperature:	23±5°C
Humidity:	55±15% RH
Fluorescent Lamp:	30W
Distance between the Panel & Lamp:	≥ 50cm
Distance between the Panel & Eyes of the Inspector:	≥ 30cm
Finger glove (or finger cover) must be worn by the inspector.	
Inspection table or jig must be anti-electrostatic.	

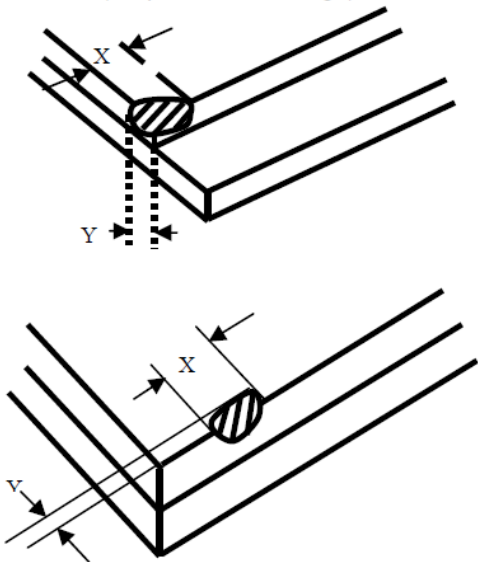
7.2. Sampling Plan

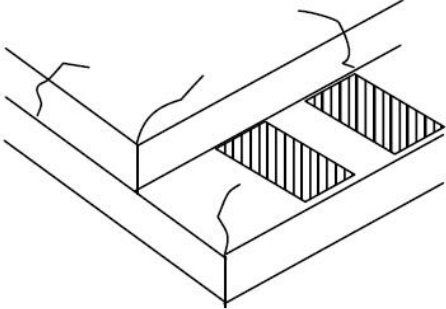

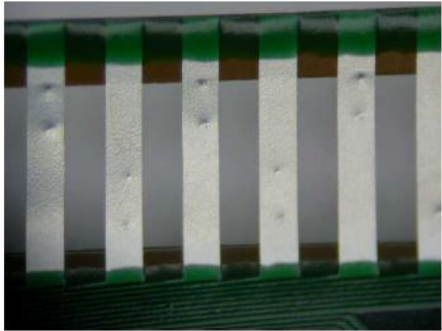
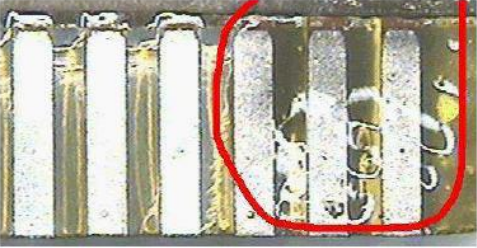
Level II, Normal Inspection, Single Sampling, MIL-STD-105E

7.3. Criteria & Acceptable Quality Level

Partition	AQL	Definition
Major	0.65	Defects in Pattern Check (Display On)
Minor	1.0	Defects in Cosmetic Check (Display Off)

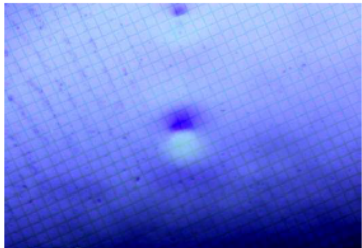
7.3.1. Cosmetic Check (Display Off) in Non-Active Area

Check Item	Classification	Criteria
Panel General Chipping	Minor	<p>X > 6 mm (Along with Edge) Y > 1 mm (Perpendicular to edge)</p> 

Check Item	Classification	Criteria
Panel Crack	Minor	<p>Any crack is not allowable.</p> 
Copper Exposed (Even Pin or Film)	Minor	Not Allowable by Naked Eye Inspection
Film or Trace Damage	Minor	
Terminal Lead Prober Mark	Acceptable	
Glue or Contamination on Pin (Couldn't Be Removed by Alcohol)	Minor	
Ink Marking on Back Side of panel (Exclude on Film)	Acceptable	Ignore for Any

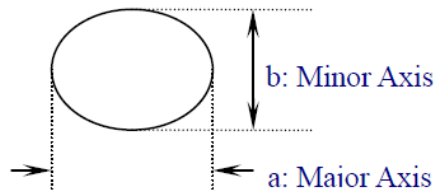
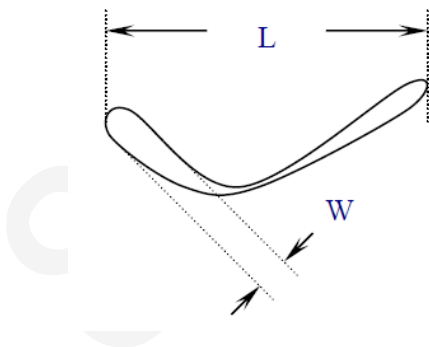
7.3.2. Cosmetic Check (Display Off) in Active Area

It is recommended to execute in clear room environment (class 10k) if actual in necessary.


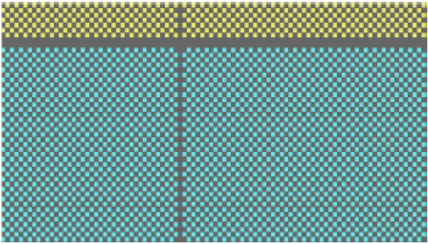
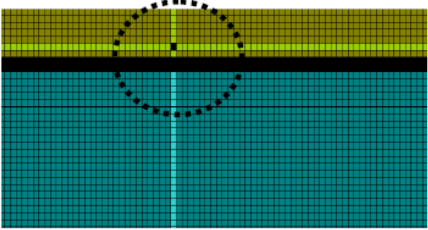
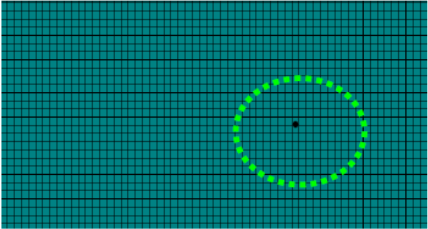
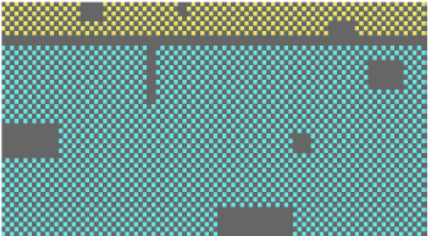
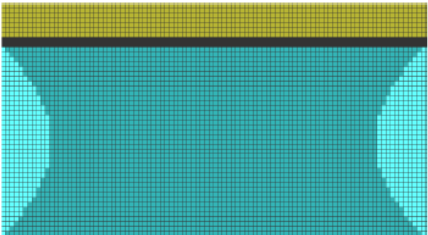
Check Item	Classification	Criteria
Any Dirt & Scratch on Polarizer's Protective Film	Acceptable	Ignore for not Affect the Polarizer
Scratches, Fiber, Line-Shape Defect (On Polarizer)	Minor	$W \leq 0.1$ Ignore $W > 0.1$ $L \leq 2$ $n \leq 1$ $L > 2$ $n = 0$
Dirt, Black Spot, Foreign Material, (On Polarizer)	Minor	$\phi \leq 0.1$ Ignore $0.1 < \phi \leq 0.25$ $n \leq 1$ $0.25 < \phi$ $n = 0$
Dent, Bubbles, White spot (Any Transparent Spot on Polarizer)	Minor	$\phi \leq 0.5$ → Ignore if no Influence on Display $0.5 < \phi$ $n = 0$ 
Fingerprint, Flow Mark (On Polarizer)	Minor	Not Allowable

* Protective film should not be tear off when cosmetic check.

** Definition of W & L & ϕ (Unit: mm): $\phi = (a + b) / 2$



7.3.3. Pattern Check (Display On) in Active Area

Check Item	Classification	Criteria
No Display	Major	
Missing Line	Major	
Pixel Short	Major	
Darker Pixel	Major	
Wrong Display	Major	
Un-uniform	Major	

8. Precautions When Using These OEL Display Modules

8.1. Handling Precautions

- 1) Since the display panel is being made of glass, do not apply mechanical impacts such as dropping from a high position.
- 2) If the display panel is broken by some accident and the internal organic substance leaks out, be careful not to inhale nor lick the organic substance.
- 3) If pressure is applied to the display surface or its neighborhood of the OEL display module, the cell structure may be damaged and be careful not to apply pressure to these sections.
- 4) The polarizer covering the surface of the OEL display module is soft and easily scratched. Please be careful when handling the OEL display module.
- 5) When the surface of the polarizer of the OEL display module has soil, clean the surface. It takes advantage of by using following adhesion tape.

*Scotch Mending Tape No. 810 or an equivalent

Never try to breathe upon the soiled surface nor wipe the surface using cloth containing solvent such as ethyl alcohol, since the surface of the polarizer will become cloudy.

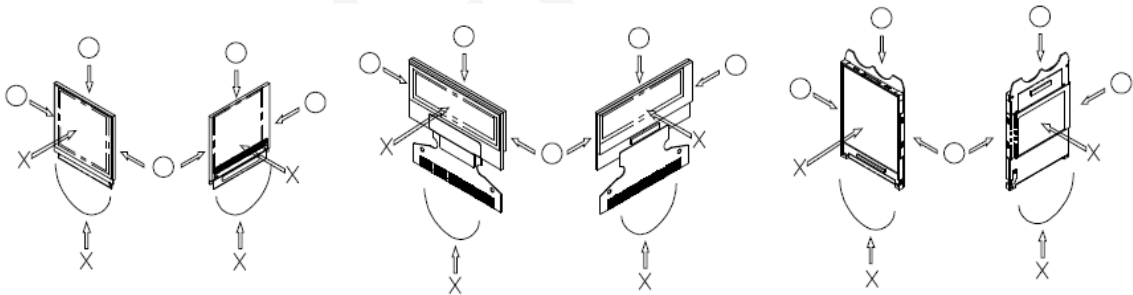
Also, pay attention that the following liquid and solvent may spoil the polarizer:

*Water

*Ketone

*Aromatic Solvents

- 6) Hold OEL display module very carefully when placing OEL display module into the system housing. Do not apply excessive stress or pressure to OEL display module. And, do not over bend the film with electrode pattern layouts. These stresses will influence the display performance. Also, secure sufficient rigidity for the outer cases.



- 7) Do not apply stress to the driver IC and the surrounding molded sections.
- 8) Do not disassemble nor modify the OEL display module.
- 9) Do not apply input signals while the logic power is off.
- 10) Pay sufficient attention to the working environments when handling OEL display modules to prevent occurrence of element breakage accidents by static electricity.
 - * Be sure to make human body grounding when handling OEL display modules.
 - * Be sure to ground tools to use or assembly such as soldering irons.
 - * To suppress generation of static electricity, avoid carrying out assembly work under dry environments.
 - * Protective film is being applied to the surface of the display panel of the OEL display module. Be careful since static electricity may be generated when exfoliating the protective film.
- 11) Protection film is being applied to the surface of the display panel and removes the protection film before assembling it. At this time, if the OEL display module has been stored for a long period of time, residue adhesive material of the protection film may remain on the surface of the display

panel after removed of the film. In such case, remove the residue material by the method introduced in the above Section 5).

12) If electric current is applied when the OEL display module is being dewed or when it is placed under high humidity environments, the electrodes may be corroded and be careful to avoid the above.

8.2. Storage Precautions

1) When storing OEL display modules, put them in static electricity preventive bags avoiding exposure to direct sun light nor to lights of fluorescent lamps. and, also, avoiding high temperature and high humidity environment or low temperature (less than 0 °C) environments. (We recommend you to store these modules in the packaged state when they were shipped from Sinocrystal Technology Co., LTD.) At that time, be careful not to let water drops adhere to the packages or bags nor let dewing occur with them.

2) If electric current is applied when water drops are adhering to the surface of the OEL display module, when the OEL display module is being dewed or when it is placed under high humidity environments, the electrodes may be corroded and be careful about the above.

8.3. Designing Precautions

1) The absolute maximum ratings are the ratings which cannot be exceeded for OEL display module, and if these values are exceeded, panel damage may be happened.

2) To prevent occurrence of malfunctioning by noise, pay attention to satisfy the VIL and VIH specifications and, at the same time, to make the signal line cable as short as possible.

3) We recommend you to install excess current preventive unit (fuses, etc.) to the power circuit (VCI). (Recommend value: 0.5A)

4) Pay sufficient attention to avoid occurrence of mutual noise interference with the neighboring devices.

5) As for EMI, take necessary measures on the equipment side basically.

6) When fastening the OEL display module, fasten the external plastic housing section.

7) If power supply to the OEL display module is forcibly shut down by such errors as taking out the main battery while the OEL display panel is in operation, we cannot guarantee the quality of this OEL display module.

8) The electric potential to be connected to the rear face of the IC chip should be as follows: SSD1351

* Connection (contact) to any other potential than the above may lead to rupture of the IC.

8.4. Precautions when disposing of the OEL display modules

1) Request the qualified companies to handle industrial wastes when disposing of the OEL display modules. Or, when burning them, be sure to observe the environmental and hygienic laws and regulations.

8.5. Other Precautions

1) When an OEL display module is operated for a long of time with fixed pattern may remain as an after image or slight contrast deviation may occur.

Nonetheless, if the operation is interrupted and left unused for a while, normal state can be restored. Also, there will be no problem in the reliability of the module.

2) To protect OEL display modules from performance drops by static electricity rapture, etc., do not touch the following sections whenever possible while handling the OEL display modules.

- * Pins and electrodes

- * Pattern layouts such as the COF

3) With this OEL display module, the OEL driver is being exposed. Generally speaking, semiconductor elements change their characteristics when light is radiated according to the principle of the solar battery. Consequently, if this OEL driver is exposed to light, malfunctioning may occur.

- * Design the product and installation method so that the OEL driver may be shielded from light in actual usage.

- * Design the product and installation method so that the OEL driver may be shielded from light during the inspection processes.

4) Although this OEL display module stores the operation state data by the commands and the indication data, when excessive external noise, etc. enters into the module, the internal status may be changed. It therefore is necessary to take appropriate measures to suppress noise generation or to protect from influences of noise on the system design.

5) We recommend you to construct its software to make periodical refreshment of the operation statuses (re-setting of the commands and re-transference of the display data) to cope with catastrophic noise.

Warranty:

The warranty period shall last twelve (12) months from the date of delivery. Buyer shall be completed to assemble all the processes within the effective twelve (12) months. Sinocrystal Technology Co., LTD. shall be liable for replacing any products which contain defective material or process which do not conform to the product specification, applicable drawings and specifications during the warranty period. All products must be preserved, handled and appearance to permit efficient handling during warranty period. The warranty coverage would be exclusive while the returned goods are out of the terms above.

Notice:

No part of this material may be reproduces or duplicated in any form or by any means without the written permission of Sinocrystal Technology Co., LTD. Sinocrystal Technology Co., LTD. reserves the right to make changes to this material without notice. Sinocrystal Technology Co., LTD. does not assume any liability of any kind arising out of any inaccuracies contained in this material or due to its application or use in any product or circuit and, further, there is no representation that this material is applicable to products requiring high level reliability, such as, medical products. Moreover, no license to any intellectual property rights is granted by implication or otherwise, and there is no representation or warranty that anything made in accordance with this material will be free from any patent or copyright infringement of a third party. This material or portions thereof may contain technology or the subject relating to strategic products under the control of Foreign Exchange and Foreign Trade Law of Taiwan and may require an export license from the Ministry of International Trade and Industry or other approval from another government agency.

10. Packing method

10.1.Packing Quantity

TBD.

10.2.Flowing chart

TBD.

SinoCrystal